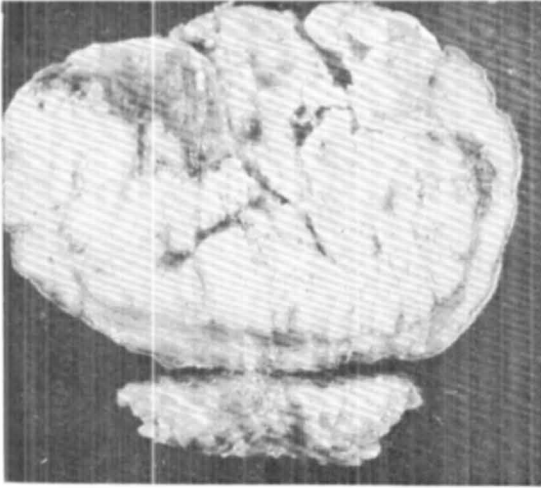
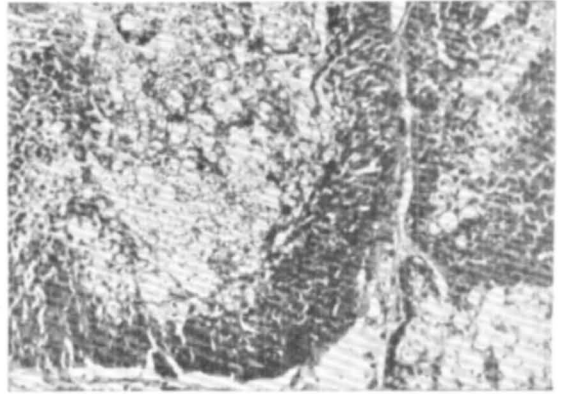


# ADENOCARCINOMA OF THE SEBACEOUS GLAND

—Sudha Narang and Gauri Bazaz Malik



**Fig. 1** Shows cut surface of a pedunculated mass with a skin flap. The tumor is seen ulcerating at the surface.



**Fig 2** Shows lobules of tumor cells arranged in compact sheets. H & E x 100.



## WHAT IS YOUR DIAGNOSIS ?

Thirty-two year old male patient complained of itchy skin lesions and increased pigmentation of the skin of six months duration. He also noticed swelling in both axillae about the same time.

Examination showed papular hyperpigmented skin lesions on the body. Some lesions were pustular and there were excoriation marks. Lymph glands were palpable in the neck, axillae and inguina regions. They were mobile, nontender and firm

### Differential diagnosis :

1. Tuberculids
2. Malignant skin infiltration
3. Id reaction to lymphoreticular malignancy.

(Answer Page No. 177)