

Corymbiform syphilis: A remarkable presentation with several coexistent morphologies

A 42-year-old man presented with several occasionally itchy and painful lesions on his trunk and extremities for six months. Examination revealed lesions of varying morphologies, including violaceous ovoid macules, depressed erythematous plaques, and crusted ulcers surrounded by multiple discrete and clustered pink, scaly, or oedematous papules [Figure 1]. Histopathology showed

superficial and deep mixed inflammatory cell infiltrate, and immunohistochemical staining for *Treponema pallidum* highlighted numerous spirochetes [Figure 2]. A positive syphilis enzyme immunoassay and reactive plasma reagin test, along with this unique bombshell-like configuration were diagnostic of a rare form of secondary syphilis known as corymbiform syphilis.



Figure 1: Erythematous to violaceous papules and plaques arranged in a corymbiform configuration on the abdomen.

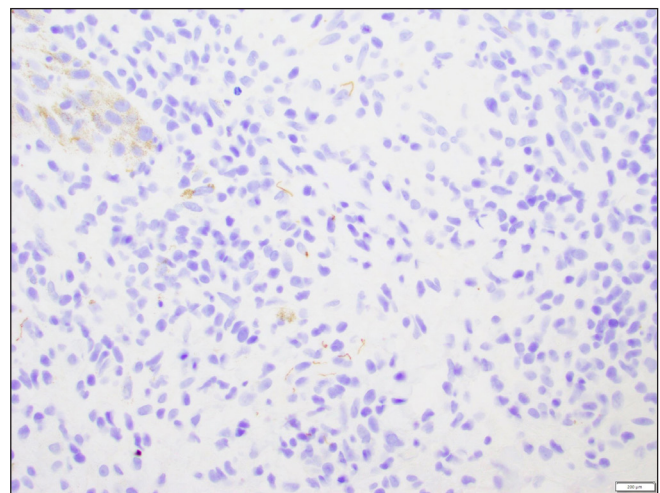


Figure 2: Immunohistochemistry stained multiple spirochetes, visualised as brown filamentous and coiled figures, at 40x magnification.

Declaration of patient consent: The authors certify that they have obtained all appropriate patient consent.

Financial support and sponsorship: Nil.

Conflicts of interest: There are no conflicts of interest.

Use of artificial intelligence (AI)-assisted technology for manuscript preparation: The authors confirm that there was no use of artificial intelligence (AI)-assisted technology for assisting in the writing or editing of the manuscript and no images were manipulated using AI.

Bryce McKenzie DeLong¹, Subuhi Kaul², David Othman², Shilpa Mehta²

¹Division of Dermatology, University of Toledo College of Medicine and Life Sciences, Toledo, Ohio, United States, ²Division of Dermatology, John H Stroger Hospital of Cook County, Chicago, Illinois, United States.

Corresponding author:

Dr. Subuhi Kaul,
Division of Dermatology, John H Stroger Hospital of Cook County,
Chicago, Illinois, United States.
dr.subuhi.kaul@gmail.com

How to cite this article: DeLong BM, Kaul S, Othman D, Mehta S. Corymbiform syphilis: A remarkable presentation with several coexistent morphologies. Indian J Dermatol Venereol Leprol. doi: 10.25259/IJDVL_1874_2024

Received: December, 2024 **Accepted:** January, 2025 **Epub Ahead of Print:** February, 2025

DOI: 10.25259/IJDVL_1874_2024

This is an open-access article distributed under the terms of the Creative Commons Attribution-Non Commercial-Share Alike 4.0 License, which allows others to remix, transform, and build upon the work non-commercially, as long as the author is credited and the new creations are licensed under the identical terms.