

A retrospective study: Clinicopathological and immunohistochemical analysis of 54 cases of tufted angioma

Xin Su, Yu Liu, Yanghe Liu, Cuiling Ma

Department of Dermatology, Xijing Hospital, Fourth Military Medical University, Xi'an, Shanxi Province, China

Abstract

Background: Tufted angioma is a rare benign lesion with vascular proliferation.

Aim: To retrospectively analyze the clinicopathological manifestations and immunohistochemical features of tufted angioma.

Methods: Clinical and histopathological features of tufted angioma ($n = 54$) were evaluated and analyzed retrospectively in the Department of Dermatology, Xijing Hospital from 2003 to 2014.

Results: Clinically, tufted angioma usually presented as erythematous plaques and papules on the head and neck ($n = 11$), trunk ($n = 21$) and extremities ($n = 22$), mainly in children ($n = 48$), without gender difference (24 males and 30 females). A total of 45 cases showed solitary lesions and nine cases showed multiple lesions. Common symptoms included pain ($n = 11$), tenderness ($n = 7$), itching ($n = 1$), hypertrichosis ($n = 7$), hyperhidrosis ($n = 6$) and Kasabach–Merritt phenomenon ($n = 1$). Histopathologically, typical tufted angioma ($n = 37$) showed proliferation of endothelial cells in a so-called cannonball pattern, while in the early ($n = 4$) and regressed ($n = 13$) stages the tufted appearance was not prominent. The proliferated endothelial cells were diffusely positive for CD31 and Wilms tumor 1, focally positive for D2-40 and Prox1, and negative for Glut-1.

Limitations: Our research was confined to patients of Chinese origin and our sample size was limited.

Conclusions: Tufted angioma is a rare vascular neoplasm with diverse clinical manifestations and unique pathological features. It should be recognized as a vascular tumor with lymphatic differentiation. We emphasize the importance of considering tufted angioma in the differential diagnoses of any congenital or acquired vascular tumor.

Key words: Hemangioma, pathology, tufted angioma

Correspondence:

Prof. Cuiling Ma,
Department of Dermatology,
Xijing Hospital, Fourth Military
Medical University, Xi'an,
Shanxi Province 710032, China.
E-mail: macuiling@fmmu.edu.cn

Introduction

Tufted angioma was first described by Sim-Davis *et al.* in 1976.¹ The same condition was named as angioblastoma by Nakagawa in 1949 in Japanese literature² and as progressive capillary hemangioma by Macmillan and Champion.³ Tufted angioma, characterized by tufts of endothelial cells

in a cannonball pattern in the dermis, is a rare benign lesion with vascular proliferation. It usually presents as dusky red to purple plaques or papules on the trunk and extremities of children and adolescents.^{4,5} Previous case series of tufted

This is an open access journal, and articles are distributed under the terms of the Creative Commons Attribution-NonCommercial-ShareAlike 4.0 License, which allows others to remix, tweak, and build upon the work non-commercially, as long as appropriate credit is given and the new creations are licensed under the identical terms.

For reprints contact: reprints@medknow.com

How to cite this article: Su X, Liu Y, Liu Y, Ma C. A retrospective study: Clinicopathological and immunohistochemical analysis of 54 cases of tufted angioma. *Indian J Dermatol Venereol Leprol* 2020;86:24-32.

Received: December, 2018. **Accepted:** March, 2019.

Access this article online	
Quick Response Code:	Website: www.ijdvil.com
	DOI: 10.4103/ijdvil.IJDVL_777_18

angioma have had the limitation of being case reports or small sample studies. Tufted angioma is sometimes misdiagnosed, thus histopathologic examination and immunohistochemistry are required for confirmation. In addition, tufted angioma with Kasabach–Merritt phenomenon, though rare, causes complications and hence needs to be recognized. Therefore, we think it is necessary to provide an in-depth study with larger sample size on tufted angioma. In this study, we collected the largest scale of tufted angioma sample from mainland China. Furthermore, we did comprehensive clinical and histopathological analysis on tufted angioma and emphasized the importance of considering tufted angioma in the differential diagnoses of any congenital or acquired vascular tumor.

Materials and Methods

After Institutional Review Board approval, the data of patients ($n = 54$) diagnosed with tufted angioma (between 2003 and 2014) were obtained from the Department of Dermatology, Xijing Hospital, Fourth Military Medical University, Xi'an, China. Those patients with incomplete clinical or pathological data were excluded. Clinical photographs, histopathology slides and paraffin blocks of all the patients were available for clinicopathological analysis and immunohistochemical study. All the patients were diagnosed with tufted angioma by clinical and histopathological features. Immunohistochemical analysis was performed in all cases. Sections were stained for CD31 (Clone JC70A, 1:100, Dako, Glostrup, Denmark), D2-40 (Clone D2-40, 1:100, Dako), Prox1 (polyclone, 1:200, AngioBio, Del Mar, USA) and WT-1 (Clone 6F-H2, 1:200, Dako). The antibodies and detection system were from Dako. Antigen retrieval was performed by heating slides with Tris–ethylenediaminetetraacetic acid buffer (pH 9) in a pressure cooker (140 KPa for 2 min).

Results

Clinical findings

Lesional samples from a total of 54 patients with tufted angioma, including 24 (55.6%) male patients and 30 (44.4%) female patients, were collected for analysis in this study. The age of the patients ranged from 1-month-old to 40-year-old, and the patients' medium age was 1-year-old. Tufted angioma usually occurs in childhood as an erythematous plaque on the trunk and extremities [Figure 1a], but there were also cases of adults acquiring tufted angioma [Figure 1b]. Lesions were usually located at head/neck, trunks and extremities, presented as papules <1 cm to plaques larger than 20 cm in diameter. A total of 45 (83.3%) cases showed solitary lesion and nine (16.7%) cases showed multiple lesions [Figure 1c]. Three (5.6%) cases showed reddish multiple plaques in a linear distribution [Figure 1d]. The lesions of 21 (38.9%) patients were asymptomatic. Common symptoms included pain, tenderness, itching, hypertrichosis and hyperhidrosis [Figure 1e]. Lesions of 39 (72.2%) patients were congenital and developed gradually over time. In addition, the age of first onset for the remaining 15 (27.8%) patients ranged from 1 month to 20 years. Lesions of two (3.7%) patients were in the quiescent state and 13 (24.1%)



Figure 1a: Erythematous plaques and papules on head



Figure 1b: Erythematous plaques were widely distributed on the front of chest, neck and shoulder



Figure 1c: Multiple reddish plaques were in a circular distribution on the left chest and back, with purple ring-shaped elevated edge and depressed center

partially subsided after treatment during a 2-year follow-up [Figure 1f]. Surgical excision seems to be effective treatment for relatively small lesions. Two (3.7%) patients achieved complete

clinical remission through surgical treatment. However, except for surgery, all other forms of treatments including interferon, topical or systemic corticosteroids and radioisotope therapy were ineffective or showed only partial success. One (1.9%) case showed tufted angioma accompanied by Kasabach–Merritt phenomenon [Figure 1g]. Clinical features of 54 cases of tufted angioma is provided in Table 1.

Histopathological findings

In our series of 54 cases, two biopsies in different sites were performed in four cases. Thirty-seven (68.5%) cases

manifested as many lobules of tufts with a “cannonball” appearance in the dermis, superficial subcutis and even deep



Figure 1d: Multiple reddish patches were in a banded distribution on the left arm and back



Figure 1e: Red plaques were on right arm with hair present



Figure 1f: Skin-colored plaques were on right leg



Figure 1g: A 2-month infant had widespread plaques on his chest and progressive thrombocytopenia. He was diagnosed with Kasabach–Merritt phenomenon

Table 1: Clinical information of 54 cases of tufted angioma

Clinical features	n (%)
Sex	
Female	30 (55.6)
Male	24 (44.4)
Age	
Median age (year)	1
Range	1-month-old to 40-year-old
0-1 year	29 (53.7)
2-6 years	12 (22.2)
7-12 years	3 (5.6)
13-18 years	4 (7.4)
Over 18 years	6 (11.1)
Anatomic site	
Head/neck	11 (20.4)
Trunk	21 (38.9)
Extremities	22 (40.7)
Lesion numbers	
Solitary lesion	45 (83.3)
Multiple lesions	9 (16.7)
Accompanying symptoms	
Pain	11 (20.4)
Tenderness	7 (13.0)
Itching	1 (1.9)
Hypertrichosis	7 (13.0)
Hyperhidrosis	6 (11.1)
Kasabach-Merritt syndrome	1 (1.9)
Treatment	
Interferon	1 (1.9)
Corticosteroids	3 (5.6)
Laser therapy	2 (3.7)
Radioisotope	3 (5.6)
Antibiotics	3 (5.6)
Surgery	2 (3.7)
TCM	2 (3.7)

TCM: Traditional Chinese Medicine

Table 2: Histopathological information of 54 cases of tufted angioma

Histopathological findings	n (%)
Biopsies count	
One biopsy	50 cases
Two biopsies	4 cases
Total biopsies	58 biopsies
Lesion stage	
Typical stage	37 cases (68.5)
Early stage	4 cases (7.4)
Regression stage	13 cases (24.1)
Others	
Epidermal hyperplasia	29 cases (53.7)
Basal pigmentation	31 cases (57.4)
Eosinophil infiltration	4 cases (7.4)

in subcutaneous tissue (2 of 58 biopsies), consistent with the direction of the intradermal vascular network [Figure 2a].



Figure 2a: Lobules of tufts with a “cannonball” appearance were showed in the dermis and superficial subcutis (hematoxylin and eosin, ×20)

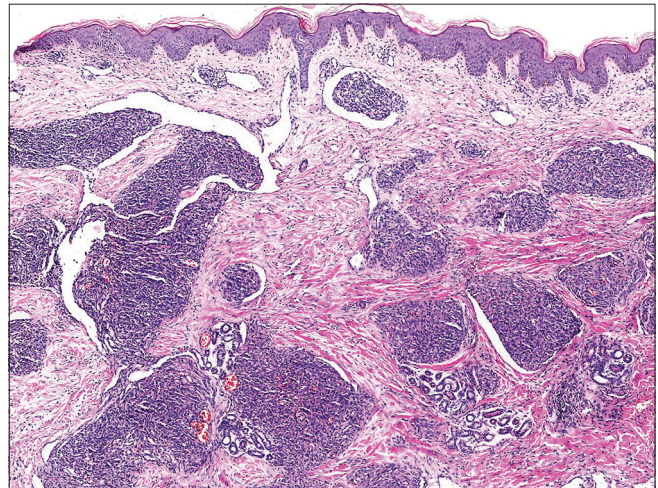


Figure 2b: The lobules of closely packed poorly canalized capillaries were lined with endothelial cells and surrounded by pericytes. (hematoxylin and eosin, ×100)

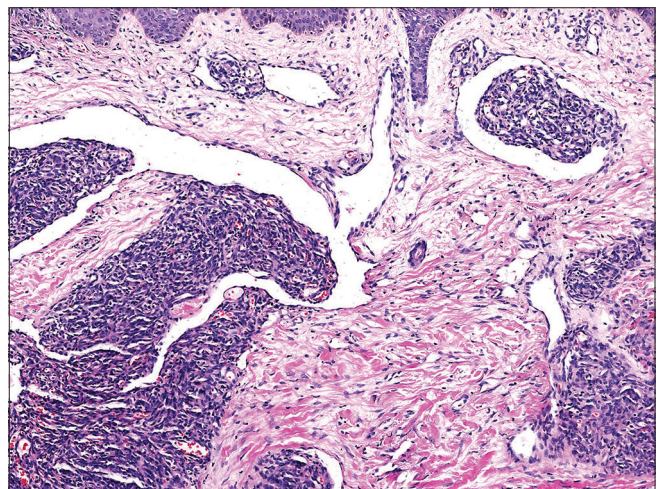


Figure 2c: The lobules of closely packed poorly canalized capillaries were lined with endothelial cells and surrounded by pericytes. Dilated crescent-shaped/semilunar lymphatic channels were at periphery. A large number of the fissure vein cavities and erythrocytes, sometimes with distended veins, were in the center (hematoxylin and eosin, ×200)

These lobules of closely packed poorly canalized capillaries were lined with endothelial cells and surrounded by pericytes. Dilated crescent-shaped/semilunar lymphatic channels were at periphery. A large number of the fissure vein cavities and erythrocytes, sometimes with distended veins, were seen in the center [Figure 2b and c]. Cellular atypia and atypical mitotic figures were not observed [Figure 2d]. Four cases (7.4%) showed poorly canalized vascular lobules without typical configuration in the dermis, indicating they were at the early stage of development. [Figure 3a]. Thirteen (24.1%) cases showed reduced endothelial cells and vascular components compared with that of typical ones, surrounded by fibrosis. These were at the regression stage. [Figure 3b]. Twenty-nine (53.7%) of 58 biopsies showed various degrees of irregular epidermal hyperplasia, 31 (57.4%) biopsies showed increased pigmentation in basal layer [Figure 4a] and 4 biopsies (7.4%) showed increased eosinophils in the dermis [Figure 4b]. The biopsy of the patient with Kasabach–Merritt phenomenon showed proliferation of endothelial cells in a lobulated pattern accompanied by microthrombus, large numbers of extravasated red blood cells adjacent to larger blood vessels and massive lymphocytic infiltration around tufts in the dermis [Figure 5a and b]. Histopathological features of 54 cases of tufted angioma is provided in Table 2.

Immunohistochemical findings

In our series of all cases, the proliferated vessels were diffusely positive for CD31 [Figure 6a] and WT1 [Figure 6b], focally positive for D2-40 [Figure 6c] and Prox1 [Figure 6d]. These findings suggest that the lymphangioma-like lesions originate from lymphatic endothelium. All biopsies were negative for Glut-1 [Figure 6e].

Discussion

Tufted angioma is a rare benign vascular proliferation that mostly appears during infancy or early childhood. Its characteristic finding is tufts of capillaries located in the dermis in a “cannonball” pattern.² In our study, we collected the largest sample of tufted angioma from mainland China and presented comprehensive clinical and histopathological analysis.

Osio described a series of 13 childhood tufted angiomas and found a clear male predominance (9 of 13 children).⁴ In our series, tufted angioma predominantly develops in infancy or early childhood without gender difference. It could present with different clinical features.^{4,5} In our cases, it usually presents as dusky red to violaceous macules, papules to plaques, varying in size and occasionally accompanied by hypertrichosis and hyperhidrosis. In line with our observations, the most common sites are neck, trunk and extremities.⁶ Most lesions slowly extend with time, being progressive but benign in nature. Occasional spontaneous regression is reported. Osio reported five of 13 children

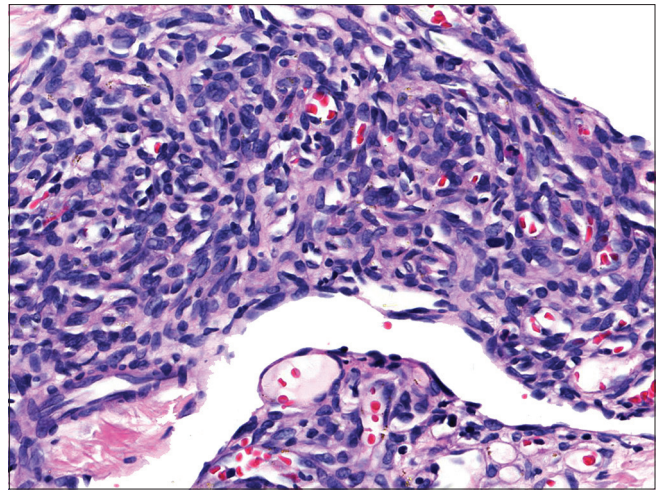


Figure 2d: Cellular atypia and irregular mitotic figures were not observed (hematoxylin and eosin, ×400)

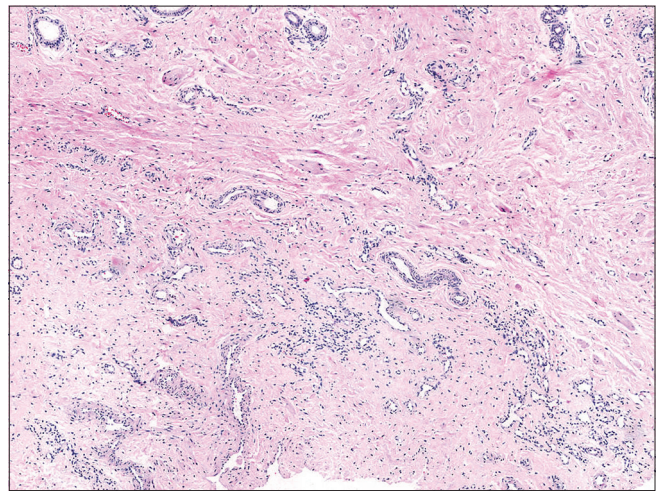


Figure 3a: Poorly canalized vascular lobules showed no typical configuration in the dermis (hematoxylin and eosin, ×200)

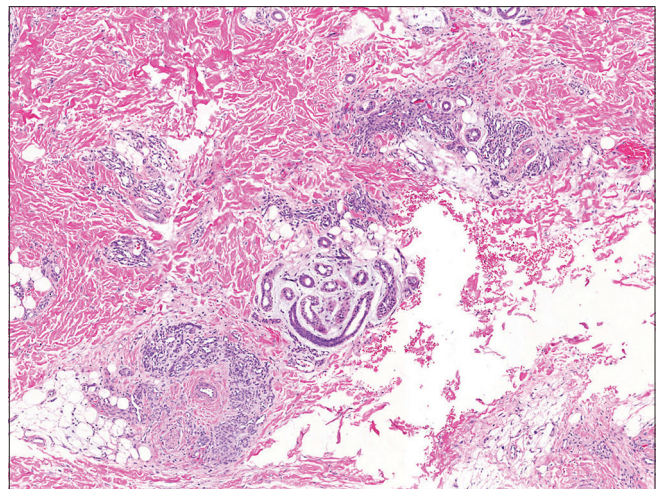


Figure 3b: Endothelial cells and vascular components were reduced compared with that of typical stage, surrounded by fibrosis by degrees (hematoxylin and eosin, ×200)

with tufted angioma showing spontaneous regression during a follow-up of 2–19 years. In our observation, however, none of the lesions subsided spontaneously during a 2-year follow-up.⁴ Besides the common type of tufted angioma, the other type is Kasabach–Merritt phenomenon, which refers to tufted angioma complicated with thrombocytopenia and coagulation dysfunction.^{2,7}

The differential diagnoses of tufted angiomas are hemangioma-like lesions and vascular malformations, including infantile hemangioma, vascular malformations, angiosarcoma, Kaposiform hemangioendothelioma and Kaposi sarcoma in adults.^{5,8} Histopathologic examination and immunohistochemistry are necessary to exclude other skin lesions. Because of the manifestation of red, swelling, warm and occasional painful mass, tufted angioma sometimes could be misdiagnosed as local infection and inflammation. Besides, due to the rarity of tufted angioma complicated with Kasabach–Merritt phenomenon, misdiagnosis often occurs. Ultrasound scan and blood tests are essential to

reduce misdiagnosis.⁹ Kasabach–Merritt phenomenon could manifest as a spectrum of features, ranging from slightly mild thrombocytopenia to life-threatening consumptive coagulopathy, even hemorrhage or disseminated intravascular coagulation. Lei reported a patient diagnosed with tufted angioma and Kasabach–Merritt phenomenon who died due to postoperation multiple organ failure caused by his platelet count fluctuation.⁹ Laboratory tests such as a complete blood count and coagulation test should be done when Kasabach–Merritt phenomenon is suspected.^{4,9}

Histologically, tufted angioma shows dense agglomerates of endothelial cell lobules and capillaries, similar to cannon balls, occasionally with hemosiderin and rarely inflammatory cells or edema.^{5,7} Typical tufted angioma is characterized by separated nodules composed of closely packed endothelial cells in the dermis, with proliferation of spindle and polygonal cells surrounding vascular channels, manifesting as tufts. The proliferating cells show no cellular pleomorphism or atypical mitotic figures.⁵ During the early

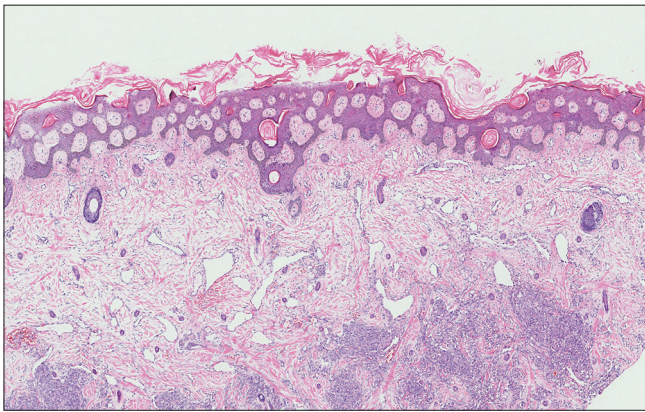


Figure 4a: Various degrees of irregular epidermal hyperplasia and increased pigmentation in basal layer are present (hematoxylin and eosin, $\times 200$)

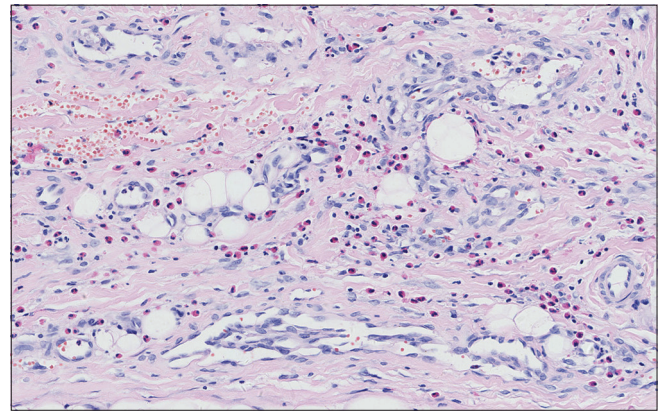


Figure 4b: Increased eosinophils infiltration were in the dermis (hematoxylin and eosin, $\times 200$)

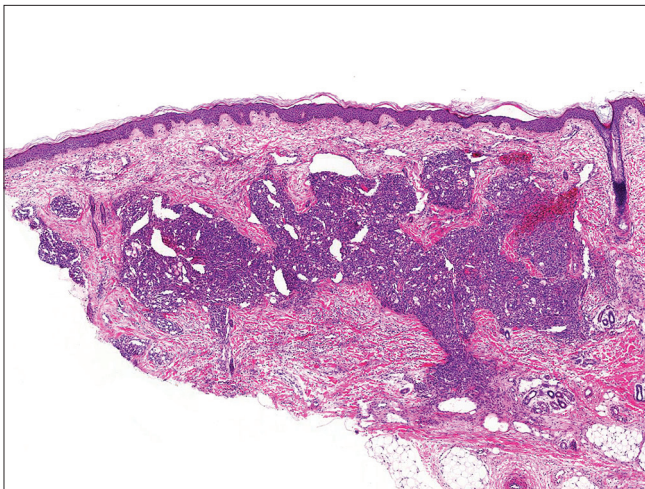


Figure 5a: Proliferation of endothelial cells were in a lobulated pattern (hematoxylin and eosin, $\times 100$)

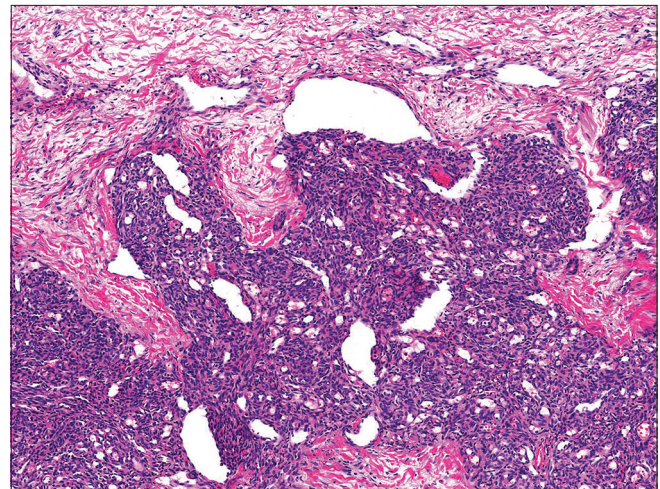


Figure 5b: Proliferation of endothelial cells were in a lobulated pattern, accompanied by microthrombus, large numbers of red blood cells overflowing adjacent to enlarged channels and massive lymphocyte infiltration around tufts in the dermis (hematoxylin and eosin, $\times 200$)

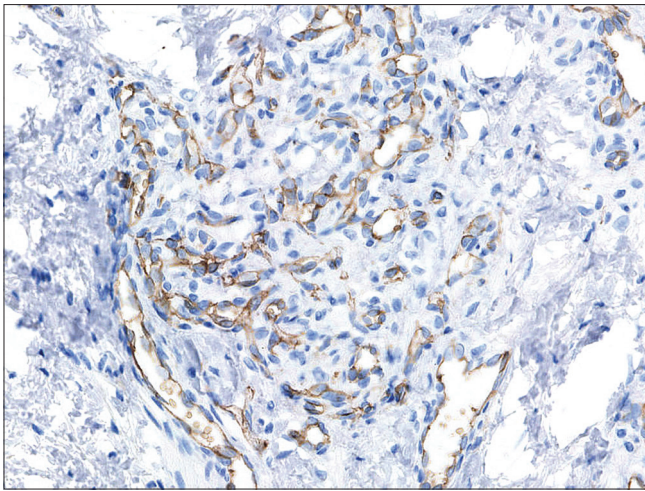


Figure 6a: The proliferated vessels were universally positive for CD31 (CD31, ×200)

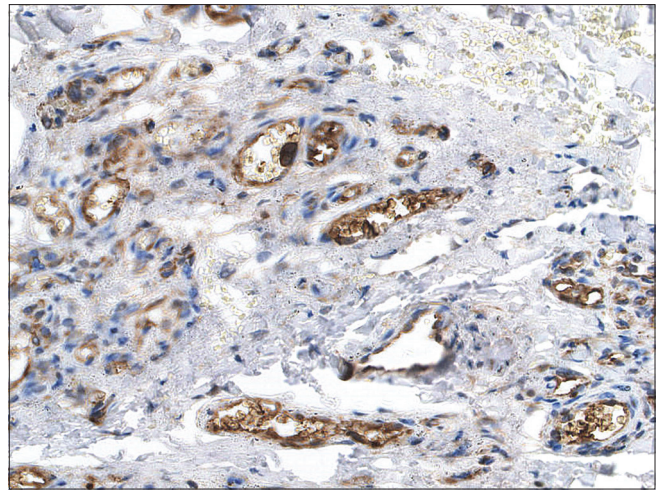


Figure 6b: The proliferated vessels were universally positive for WT-1 (WT-1, ×200)

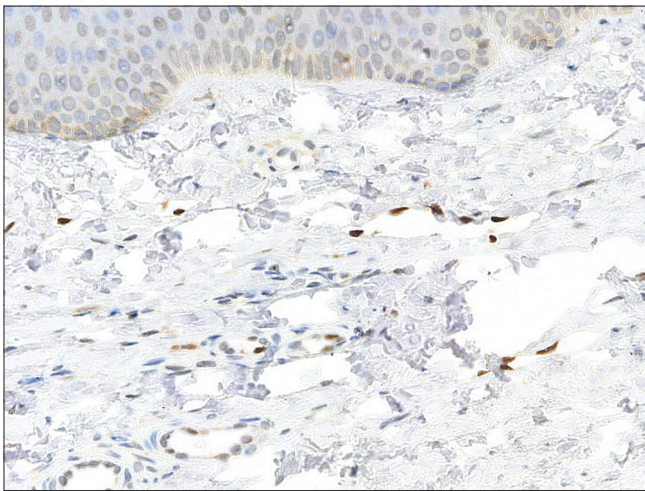


Figure 6c: The vascular proliferations were focally positive for Prox1 (CD31, ×200)

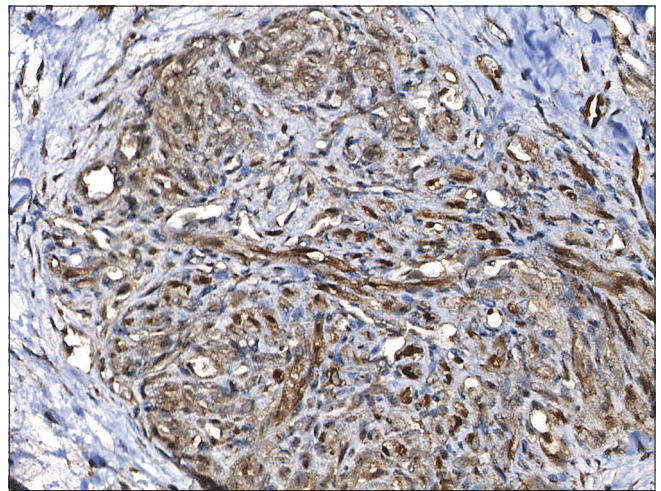


Figure 6d: The vascular proliferations were focally positive for D2-40 (CD31, ×200)

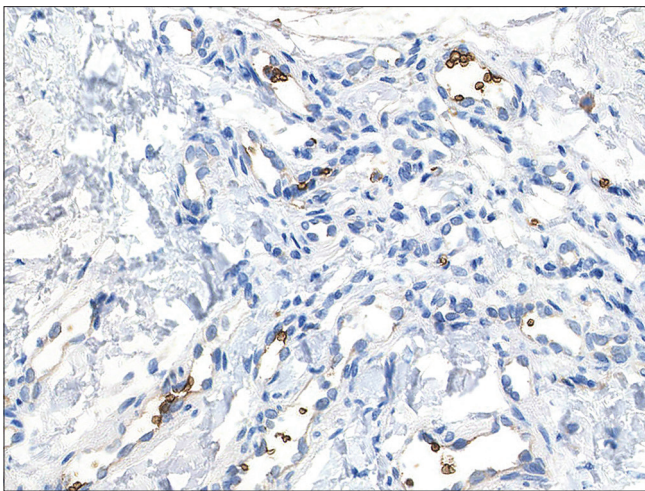


Figure 6e: The proliferated vessels were negative for Glut1 (CD31, ×200)

and the regressing stage of tufted angioma, the pathological manifestations of tufts are not typical. The tufts of endothelial

cell lobules and capillaries are reduced and fibrous tissue is irregularly proliferated. Increased basal layer pigmentation leads to different colors of skin lesions, from dusky red to purple. In our series, four biopsies exhibited eosinophil infiltration in the dermis on the sections, but only one patient complained of itching clinically.

Sadeghpour demonstrated that tufted angiomas showed the characteristics of both tufted angioma and Kaposiform hemangioendothelioma. They are mutually transformational, and sometimes these two subtypes of hemangioma are supposed to have certain overlaps.^{10,11} Some scholars think that tufted angioma and Kaposiform hemangioendothelioma seem to represent two polar ends of a spectrum of histopathological findings. Typically, tufted angioma is more superficially located in the skin, while Kaposiform hemangioendothelioma is located in the deep soft tissue.¹¹ Besides, Kaposiform hemangioendothelioma is characterized by infiltrating nodules and sheets of spindle

cells and is considered as intermediate malignancy.¹² In our series, Kaposiform hemangioendothelioma was not included.

Tufted angioma expresses endothelial and lymphatic vascular markers CD31, CD34, vascular endothelial growth factor-A and D2-40.⁶ Vascular endothelial growth factor-A has been reported to be diffuse nonspecific positive in epidermis and endothelial cells in tufted angioma. GLUT1 is negative in tufted angioma.¹¹ The intracytoplasmic staining pattern of Wilms tumor 1 indicating vascular neoplasm is positive in tufted angioma.¹³ Wilms tumor 1 has been recognized as an ideal marker for differential diagnosis between vascular neoplasms and vascular malformations.^{14,15} In our series, the proliferated vessels were diffusely positive for CD31 and Wilms tumor 1, which confirms the conclusion that tufted angioma is a vascular proliferation rather than vascular malformation.

Our samples were focally positive for Prox1. Prox1 is a transcription factor that is recognized as a key regulator of lymphatic endothelial differentiation.¹⁶⁻¹⁸ It is reported to be specifically expressed in normal lymphatic endothelial cells and proliferated lymphatic vessel cells.¹⁹⁻²¹ Prox1 has been reported to be positive in some capillary hemangiomas and cavernous hemangiomas.²⁰ Besides, Prox1 has been reported to be expressed in benign vascular lesions, including tufted angioma,²¹ Kaposiform hemangioendothelioma²¹ and spindle cell hemangioma.²⁰ Prox1 shows positive staining in tufted angioma and Kaposiform hemangioendothelioma, while it is negative in infantile hemangioma and pyogenic granulomas.¹⁴ This suggests that tufted angioma and Kaposiform hemangioendothelioma might have a lymphatic origin. In tufted angioma, Kaposiform hemangioendothelioma and spindle cell hemangioma, Prox1 is reported to show a focally positive nuclear staining pattern, same as in our observations.

Our samples were focally positive for D2-40. D2-40 is supposed to be a marker for the diagnosis of tufted hemangioma and Kaposiform hemangioendothelioma. D2-40 label in tufted hemangiomas is shown in the widened superficial vessels and is negative or patchy in the capillaries of the cannonball vessels.¹¹ D2-40 is also reported to be positive in the small capillaries in tufted angioma.⁶ In most of the cases, D2-40 is focally positive in tufted angioma, Kaposiform hemangioendothelioma, and spindle cell hemangioma, similar to our observations.^{20,21}

Currently, there are no treatment guidelines, and the therapy for tufted angioma is limited. Treatments with local or systemic corticosteroids, laser, surgical resection, interferon alpha, chemotherapy and radiotherapy have been successful in individual case reports.^{7,9} In our series, treatment with surgical excision showed complete clinical remission for relatively small lesions. Other forms of treatment showed

only partial or no response. It is essential to obtain a complete blood cell count and coagulation function test when suspecting a child with tufted angioma complicated with Kasabach–Merritt phenomenon.⁴ Owing to the high mortality rate of this condition, it should be intervened as early as possible. Kasabach–Merritt phenomenon needs aggressive treatment, such as corticosteroids, vincristine or interferon- α .⁶

There are some limitations in our study. Our study is only from Chinese people and all the clinical data is obtained from mainland China. The clinical and pathological features of tufted angioma from other populations or other countries are not included. Besides, our sample size is limited. An in-depth study with larger sample size will contribute to the further research on tufted angioma.

Conclusion

In this study, we described the clinical manifestations and histopathological characteristics of tufted angioma. Tufted angioma predominantly occurs in infancy or early childhood without gender difference. It usually presents with dusky red to violaceous macules, papules to plaques of varying size on neck, trunk and extremities. Symptoms include pain, tenderness, itching, hypertrichosis, hyperhidrosis and Kasabach–Merritt phenomenon. We also performed immunohistochemical studies, with the conclusion that tufted angioma should be recognized as a vascular tumor with lymphatic differentiation. It is important to consider tufted angioma in the differential diagnoses of any congenital or acquired vascular tumor.

Declaration of patient consent

The authors certify that they have obtained all appropriate patient consent forms. In the form, the patients have given their consent for their images and other clinical information to be reported in the journal. Patients understand that name and initials will not be published and due efforts will be made to conceal their identity, but anonymity cannot be guaranteed.

Financial support and sponsorship

Natural Science Foundation of China (grant no. 81672691) was used to help support writing the report.

Conflicts of interest

There are no conflicts of interest.

References

1. Sim-Davis D, Marks R, Wilson-Jones E. The inverted follicular keratosis. A surprising variant of seborrheic wart. *Acta Derm Venereol* 1976;56:337-44.
2. Silva CM, Schettini AP, Santos M, Chirano CA. Tufted angioma. *An Bras Dermatol* 2017;92:742-3.
3. Macmillan A, Champion RH. Progressive capillary haemangioma. *Br J Dermatol* 1971;85:492-3.
4. Osio A, Fraitag S, Hadj-Rabia S, Bodemer C, de Prost Y, Hamel-Teillac D. Clinical spectrum of tufted angiomas in childhood:

- A report of 13 cases and a review of the literature. *Arch Dermatol* 2010;146:758-63.
5. da Silva AD, Ramos Gde O, Gomes RF, Martins MA, Lamers ML, Santa'Ana Filho M, *et al.* Tufted angioma in children: Report of two cases and a review of the literature. *Case Rep Dent* 2014;2014:942489.
 6. Kazlouskaya V, Lytvynenko B, Blochin E. Tufted hemangioma: Clinical case and literature review. *Dermatol Pract Concept* 2014;4:33-5.
 7. Pires CA, Sousa BA, Amin GA, Bittencourt Mde J, Miranda MF, Carneiro FR. Tufted angioma in ear auricle: Importance of the differential diagnosis. *An Bras Dermatol* 2013;88:113-5.
 8. Yang W, Xu H, Zeng S, Fu R, Zeng H, Tan M, *et al.* Clinicopathologic features and differential diagnoses of non-involuting congenital hemangioma in children. *Zhonghua Bing Li Xue Za Zhi* 2015;44:495-8.
 9. Lei HZ, Sun B, Ma YC, Li MM, Wang LF, Jiang SW, *et al.* Retrospective study on the outcomes of infantile tufted angioma complicated by Kasabach-Merritt phenomenon. *Clin Chim Acta* 2018;486:199-204.
 10. Fernandez AP, Wolfson A, Ahn E, Maldonad JC, Alonso-Llamazares J. Kasabach-Merritt phenomenon in an adult man with a tufted angioma and cirrhosis responding to radiation, bevacizumab, and prednisone. *Int J Dermatol* 2014;53:1165-76.
 11. Sadeghpour M, Antaya RJ, Lazova R, Ko CJ. Dilated lymphatic vessels in tufted angioma: A potential source of diagnostic confusion. *Am J Dermatopathol* 2012;34:400-3.
 12. Makino T, Ishida W, Hamashima T, Mizawa M, Sasahara M, Shimizu T. An intermediate vascular tumour between Kaposiform hemangioendothelioma and tufted angioma with regression of the skin lesion. *Eur J Dermatol* 2017;27:175-6.
 13. Tokat F, Lehman JS, Sezer E, Cetin ED, Ince U, Durmaz EO. Immunoreactivity of Wilms tumor 1 (WT1) as an additional evidence supporting hemangiomatous rather than inflammatory origin in the etiopathogenesis of angiolymphoid hyperplasia with eosinophilia. *Dermatol Pract Concept* 2018;8:28-32.
 14. Le Huu AR, Jokinen CH, Rubin BP, Mihm MC, Weiss SW, North PE, *et al.* Expression of prox1, lymphatic endothelial nuclear transcription factor, in Kaposiform hemangioendothelioma and tufted angioma. *Am J Surg Pathol* 2010;34:1563-73.
 15. Trindade F, Tellechea O, Torrello A, Requena L, Colmenero I. Wilms tumor 1 expression in vascular neoplasms and vascular malformations. *Am J Dermatopathol* 2011;33:569-72.
 16. Wigle JT, Harvey N, Detmar M, Lagutina I, Grosveld G, Gunn MD, *et al.* An essential role for prox1 in the induction of the lymphatic endothelial cell phenotype. *EMBO J* 2002;21:1505-13.
 17. Hirakawa S, Hong YK, Harvey N, Schacht V, Matsuda K, Libermann T, *et al.* Identification of vascular lineage-specific genes by transcriptional profiling of isolated blood vascular and lymphatic endothelial cells. *Am J Pathol* 2003;162:575-86.
 18. Hong YK, Detmar M. Prox1, master regulator of the lymphatic vasculature phenotype. *Cell Tissue Res* 2003;314:85-92.
 19. Wilting J, Papoutsis M, Christ B, Nicolaidis KH, von Kaisenberg CS, Borges J, *et al.* The transcription factor Prox1 is a marker for lymphatic endothelial cells in normal and diseased human tissues. *FASEB J* 2002;16:1271-3.
 20. Castro EC, Galambos C. Prox-1 and VEGFR3 antibodies are superior to D2-40 in identifying endothelial cells of lymphatic malformations – A proposal of a new immunohistochemical panel to differentiate lymphatic from other vascular malformations. *Pediatr Dev Pathol* 2009;12:187-94.
 21. Miettinen M, Wang ZF. Prox1 transcription factor as a marker for vascular tumors-evaluation of 314 vascular endothelial and 1086 nonvascular tumors. *Am J Surg Pathol* 2012;36:351-9.