

PILOMATRIXOMA OF MALE BREAST

KAMLA DEVI * A. K. GUPTA † R. K. SAIGAL ‡

Summary

Pilomatrixoma is an uncommon tumour of the skin and is characterised by transition of basophilic cells into shadow cells. The present case is described here because of certain unusual features namely origin from the male breast, production of hair within the tumour and association with infiltrating duct carcinoma of the breast.

Case Report

36 years old male patient was admitted to the hospital with gradually increasing swelling of the right breast for one year. It had ulcerated a few months later. There was no lymphadenopathy. Clinically the case was diagnosed as ulcerated sebaceous cyst and the mass was removed.

On gross examination, the mass, partially covered with ulcerated skin, measured 7 x 5 x 3 cm. It was firm to hard in consistency. The ulcerated area showed a protuberant matted hard mass of yellowish brown hair. Cut surface showed mainly hair and chalky areas of calcification. Microscopically the tumour showed typical features of pilomatrixoma with basophilic cells surrounding large areas of shadow cells (Fig. 1). Transition from basophilic cells to shadow (ghost) cells was clearly visible (Fig. 2). Extensive keratinisation, hair follicle formation and areas of calcification were seen in the shadow cells. Focal areas of

melanin deposits were also seen. Stroma showed acute and chronic inflammatory reaction with foreign body giant cells.

Sections from adjacent part of the breast showed infiltrating duct carcinoma (Fig. 3). No transition zone could be seen between pilomatrixoma and the carcinoma. The malignant cells were seen invading the stroma of the surrounding breast.

Discussion

Pilomatrixoma is commonly known as calcifying epithelioma of Malherbe but the term pilomatrixoma is preferred these days because of its origin from pilar apparatus, benign nature and absence of calcification in some of the cases. Although the tumour was originally described in 1880¹ not many reports have appeared in the Indian-medical literature^{2,4}.

The origin of pilomatrixoma from female breast has been reported earlier^{2,3}. However, its occurrence in male breast with infiltrating duct carcinoma and production of well differentiated hair have not been described so far.

* Senior Lecturer in Pathology

† Asstt. Professor in Pathology

‡ Prof. & Head, Deptt. of Pathology
Government Medical College, Patiala.

Received for publication on 23-11-1981

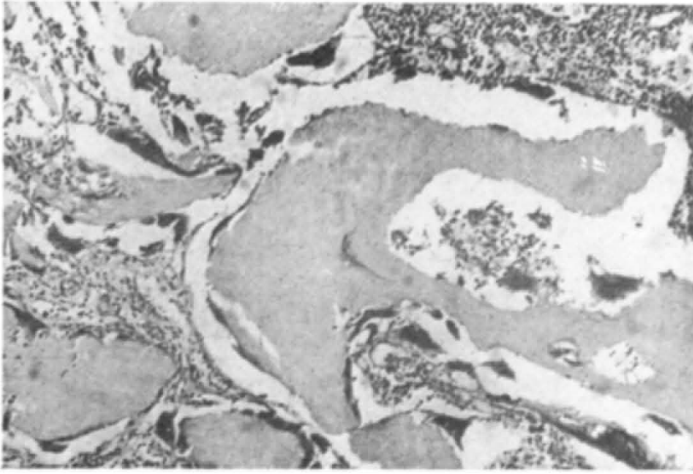


Fig. 1
Photomicrograph showing irregular groups of shadow cells surrounded by syncytial groups of basophilic cells, foreign body giant cells and inflammatory cells. H & E \times 50.

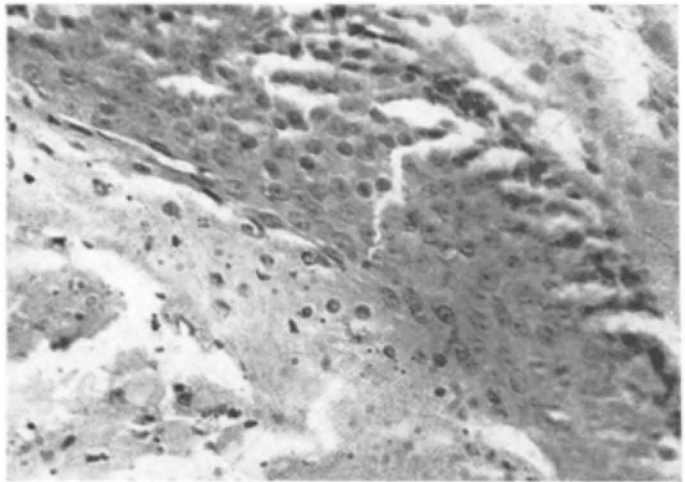


Fig. 2
Photomicrograph shows transition of basophilic cells into shadow cells. H & E \times 50.

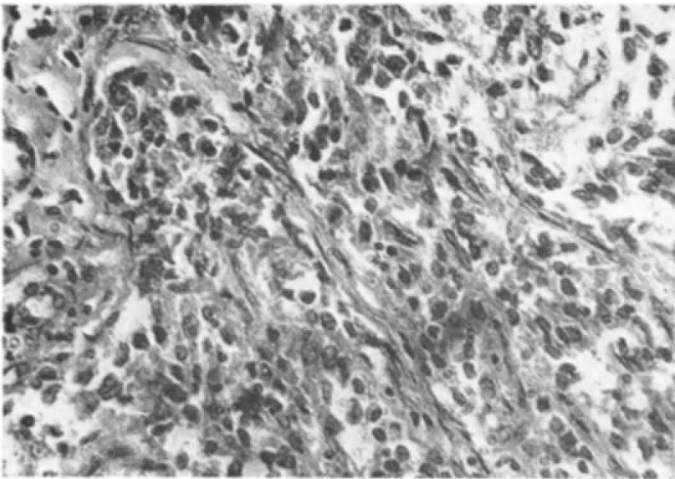


Fig. 3
Photomicrograph of infiltrating duct carcinoma of male breast. H & E \times 50.

References :

1. Malherbe A, Chenantais J: Note Surl epithelioma calcific des glands sebacees progr Med Paris 1880; 8: 826-828.
 2. Mehrotra TN, Tahiliani ND, Gupta SC, Pande SR: Calcifying epithelioma-report of a case. Indian J Path Bact 1967; 10: 280-283.
 3. Thomas JA, Kothare SN: Calcifying epithelioma of Malherbe—a true tumour or a malformation? Indian J Cancer 1975; 12: 179-186.
 4. Vaishnav VP, Dharkar DD: Adnexal tumour of skin, Indian J Path Bact 1974; 17: 33-38.
-

Announcement

Dr. F. Handa Prizes: for the best paper presented or published by persons below 35 years. It is proposed to initiate this prize at the ensuing XI All India Conference of IADVL to be held in January 1983 at Mangalore. Members desirous of being considered for the prize should intimate the scientific chairman when submitting their abstract and/or submit their published paper for consideration not later than October 31, 1982.

M.G.M. Medical College Medal instituted by the organisers of IX Annual Conference of IADVL (Indore)—for the best paper by a young scientist. It is proposed to initiate this prize at the ensuing XI All India Conference of IADVL to be held in January 1983 at Mangalore. Members desirous of being considered for the award should intimate the scientific chairman when submitting their abstract not later than October 31, 1982.

Only members and associate members of the Association are eligible for the above prize and award.