

Superficial basal cell carcinoma at the site of herpes zoster: Wolf's isotopic response or idiopathic?

Dear Editor,

Wolf's isotopic response (WIR), first described in 1955, is defined as the occurrence of new dermatoses at a site that has already healed from a previous unrelated dermatosis. This is different from the isomorphic response (Koebner phenomenon), which is the development of the same disease on traumatized skin. Herpes zoster is a common cause of WIR; in fact WIR was labelled the "postherpetic isotopic response" because several types of cutaneous lesions have been described occurring within cleared cutaneous herpes zoster, or, less frequently, herpes simplex lesions.¹ However, among the numerous dermatoses reported and discussed as manifestations of WIR, skin neoplasia has been rarely observed. Herein, we describe a case of superficial basal cell carcinoma (BCC) that developed at a healed herpes zoster site.

A 104-year-old woman presented with several pruritic and painful violaceous patches and plaques of various sizes on her right back, which had persisted for 2 years [Figure 1]. She had developed herpes zoster in the same anatomical location 20 years earlier. She had a medical history of cholangiocarcinoma and hypertension. A skin biopsy was performed to diagnose and rule out cutaneous metastasis of malignancy. Histopathological examination revealed nests of basaloid cells arising from the basal layer. The nests did not extend beyond the papillary dermis [Figures 2]. Based on the histopathological findings, we diagnosed the patient as having WIR with superficial BCC at the site of a previous herpes zoster infection. Considering the patients' advanced age and lesion size, surgical treatment was deemed inappropriate. Instead, imiquimod 5% cream was prescribed, and the patient's instructions were to apply the cream to the affected area three times a week.

The size and thickness of the lesions gradually reduced after 7 months of treatment with imiquimod [Figure 3]. The patient is presently undergoing follow-up care.

Previously, Ruocco *et al.* reviewed 189 well-documented cases of WIR, of which 37 patients had malignant tumors, including breast carcinoma, squamous cell carcinoma, BCC,

basosquamous carcinoma, Bowen's disease, metastasis, and angiosarcoma.² It is interesting to note that in WIR, the interval between primary and secondary diseases can vary widely, ranging from a few days to several years. Although numerous dermatoses have been reported to manifest as WIR, only five cases of BCC have been reported, with intervals ranging from 1 year to 35 years (mean 12.1 ± 11.5 years).^{2,3} In our case, the interval was 18 years. This highlights the importance of continuous follow-up and monitoring for the development of



Figure 1: Focal erythematous to violaceous patches and plaques with some pigmentation and ulcerations on the patient's right back.

How to cite this article: Kwak JH, Na CH, Kim MS, Choi H. Superficial basal cell carcinoma at the site of herpes zoster: Wolf's isotopic response or idiopathic? *Indian J Dermatol Venereol Leprol.* 2025;91:84-6. doi: 10.25259/IJDVL_44_2023

Received: January, 2023 **Accepted:** April, 2023 **Epub Ahead of Print:** May, 2023 **Published:** December, 2024

DOI: 10.25259/IJDVL_44_2023 **PMID:** 37317757

This is an open-access article distributed under the terms of the Creative Commons Attribution-Non Commercial-Share Alike 4.0 License, which allows others to remix, transform, and build upon the work non-commercially, as long as the author is credited and the new creations are licensed under the identical terms.

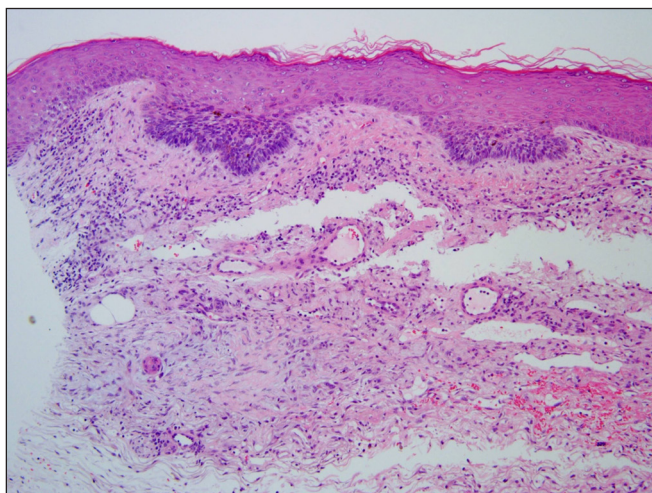


Figure 2a: Several nests of basaloid cells arising from the basal layer are visible (Haematoxylin & eosin, 100x).

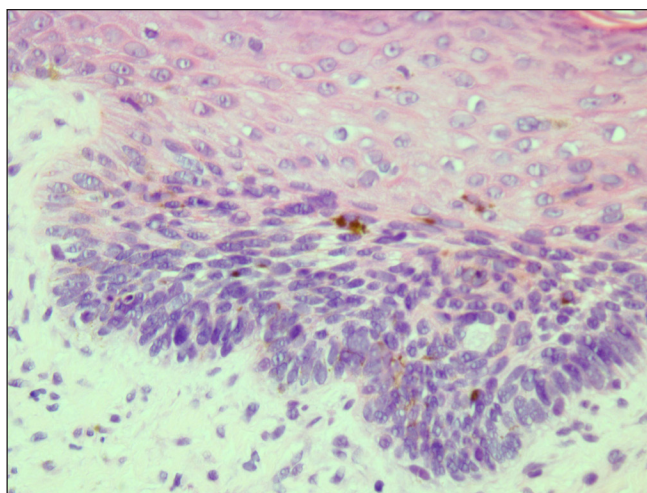


Figure 2b: The basaloid cells are confined to the basal layer and do not extend beyond the papillary dermis (Haematoxylin & eosin, 400x).

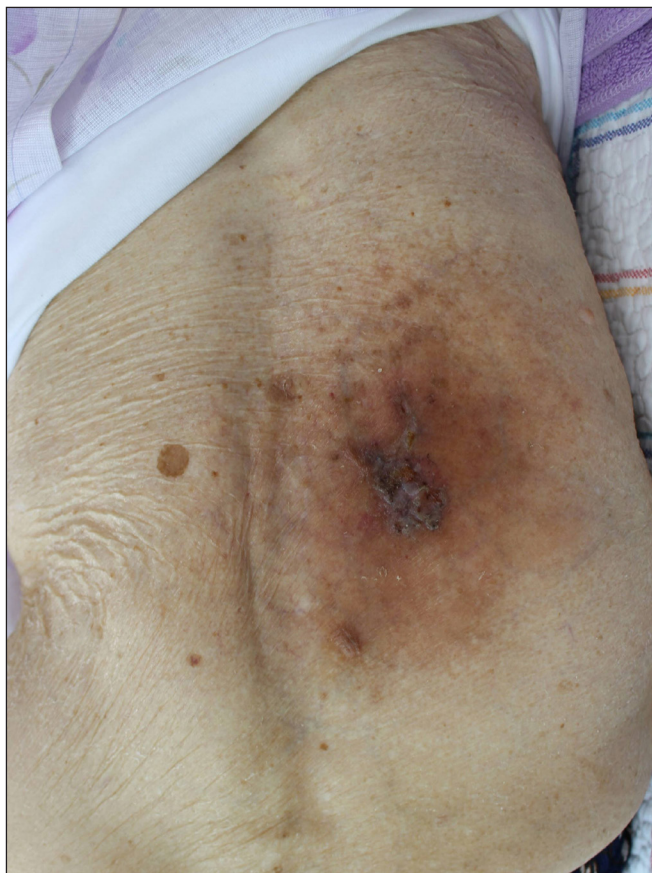


Figure 3: The size and thickness of the lesion reduced after 7 months of treatment

new dermatoses at sites of previous herpes zoster infections or skin injuries.

Although the mechanism and pathogenesis of WIR are still unclear, there are various hypotheses regarding the same, some of which are as follows: (1) viral particles remaining in the tissue may cause the second disease; (2) immunologic changes following viral infection may make the skin more

vulnerable, leading to the second disease; (3) microvascular alteration acts as a cofactor in WIR; (4) neurologic alteration may interact with the immune system.¹ Among these hypotheses, we speculate that the “locus minoris resistentiae” or immunocompromised cutaneous district may have been the mechanism in our case. This concept suggests that there may be areas of the body that are more susceptible to immune dysfunction. Varicella zoster virus can cause neural damage and result in the altered secretion of neuromediators, which interact with membrane receptors of immune cells. This can lead to local immune dysfunction and encourage the development of another disease in the affected dermatome.⁴ The fact that an increased prevalence of BCC is observed in people with a history of herpes zoster infection supports this hypothesis.⁵

The pathogenesis and interval of BCC after herpes zoster infection, possibly due to WIR, are not yet fully understood. In our case, it may have been a superficial BCC that was idiopathic because of advanced age; however, attention was paid to the association because it occurred at the site of a previous herpes zoster infection. Dermatologists should be aware that various dermatoses, including BCC, may occur at the site of healed herpes zoster. Further studies are needed to better understand the relationship between BCC and a history of herpes zoster and thereby determine the underlying mechanisms.

Declaration of patient consent: The authors certify that they have obtained all appropriate patient consent.

Financial support and sponsorship: This study was supported by research fund from Chosun University Hospital 2022.

Conflicts of interest: There are no conflicts of interest.

Use of artificial intelligence (AI)-assisted technology for manuscript preparation: The authors confirm that there was no use of artificial intelligence (AI)-assisted technology for assisting in the writing or editing of the manuscript and no images were manipulated using AI.

*Jun Ho Kwak¹, Chan Ho Na¹, Min Sung Kim¹,
Hoon Choi¹*

¹Department of Dermatology, Chosun University College of Medicine, Gwangju, Republic of Korea

Corresponding author:

Dr. Hoon Choi,
Department of Dermatology, Chosun University College of
Medicine, Pilmundaero 365, Gwangju, Republic of Korea.
choihoon@chosun.ac.kr

References

1. Ruocco V, Ruocco E, Ghersetich I, Bianchi B, Lotti T. Isotopic response after herpesvirus infection: an update. *J Am Acad Dermatol* 2002;46:90–4.
2. Ruocco V, Ruocco E, Brunetti G, Russo T, Gambardella A, Wolf R. Wolf's post-herpetic isotopic response: Infections, tumors, and immune disorders arising on the site of healed herpetic infection. *Clin Dermatol* 2014;32:561–8.
3. Wyburn-Mason R. Malignant change arising in tissues affected by herpes. *Br Med J* 1955;2:1106–9.
4. Piccolo V, Baroni A, Russo T, Schwartz RA. Ruocco's immunocompromised cutaneous district. *Int J Dermatol* 2016;55:135–41.
5. Drucker AM, Li WQ, Cho E, Li T, Besdine R, Qureshi AA, *et al.* Shingles and pneumonia and risk of cutaneous basal and squamous cell carcinoma. *J Am Acad Dermatol* 2021;85:492–5.

Lues maligna and HIV mimicking aggressive epidermotropic CD8+ cutaneous T-cell lymphoma

Dear Editor,

Both the human immunodeficiency virus (HIV) infection and syphilis are sexually transmitted infections (STIs) in which diagnostic challenges arise due to alterations in their natural progression when co-infecting a mutual host.¹ Syphilis, a “great imitator” of skin disorders, has an extensively variable clinical appearance.² Chancre facilitates the penetration of the viruses, while the treponemal infection activates the upregulation of transcription factors, leading to the enhancement of HIV-viral replication and the reduction of CD4 cells.³ The HIV infection impairs both humoral and cellular immunity

thus modifying the defence against *T. pallidum* and increasing the risk of unfavourable progression.³ We observed a rare clinical manifestation of malignant syphilis in an HIV-positive patient mimicking aggressive epidermotropic CD8 + cutaneous T-cell lymphoma (CTCL).

A 41-year-old Caucasian male presented with a 5-month-history of ulcerations over the face, the trunk and the upper limbs. The initial papules rapidly progressed to painless ulcers surrounded by an erythematous rim which subsequently developed haemorrhagic crusts at the periphery [Figures 1a and 1b]. The patient had fever up to 38.9°C, night sweats and



Figure 1a: Lichenoid papular rash and ulcerative lesions with necrotic center and peripheral erythema upon admission.



Figure 1b: Ulcerative lesions on face.

How to cite this article: Petrova E, Mateeva V, Kafelova A, Saleva-Stateva M, Radeva I, Yancheva N, *et al.* Lues maligna and HIV mimicking aggressive epidermotropic CD8+ cutaneous T-cell lymphoma. *Indian J Dermatol Venereol Leprol.* 2025;91:86-8. doi: 10.25259/IJDVL_203_2023

Received: February, 2023 **Accepted:** June, 2023 **Epub Ahead of Print:** July, 2023 **Published:** December, 2024

DOI: 10.25259/IJDVL_203_2023 **PMID:** 37609748

This is an open-access article distributed under the terms of the Creative Commons Attribution-Non Commercial-Share Alike 4.0 License, which allows others to remix, transform, and build upon the work non-commercially, as long as the author is credited and the new creations are licensed under the identical terms.