

## Linear and annular lupus panniculitis of the scalp

A 32-year-old man presented with a two-year history of annular alopecia of the scalp [Figure 1]. Hair loss was initially focal but gradually enlarged in an annular pattern. Trichoscopy revealed dystrophic hair, mild erythema, and perifollicular white scales [Figure 2]. Physical, laboratory, mycological examination and hair pull test results were unremarkable. A skin biopsy was conducted from the erythematous rim

of the alopecic patch. Histopathology showed moderate lymphocytic infiltration, mainly in the deep dermis and subcutis, with hyaline fat necrosis [Figure 3]. Linear and annular lupus panniculitis of the scalp was diagnosed based on the clinicopathological features. Complete hair regrowth was achieved after glucocorticoid and hydroxychloroquine treatment.



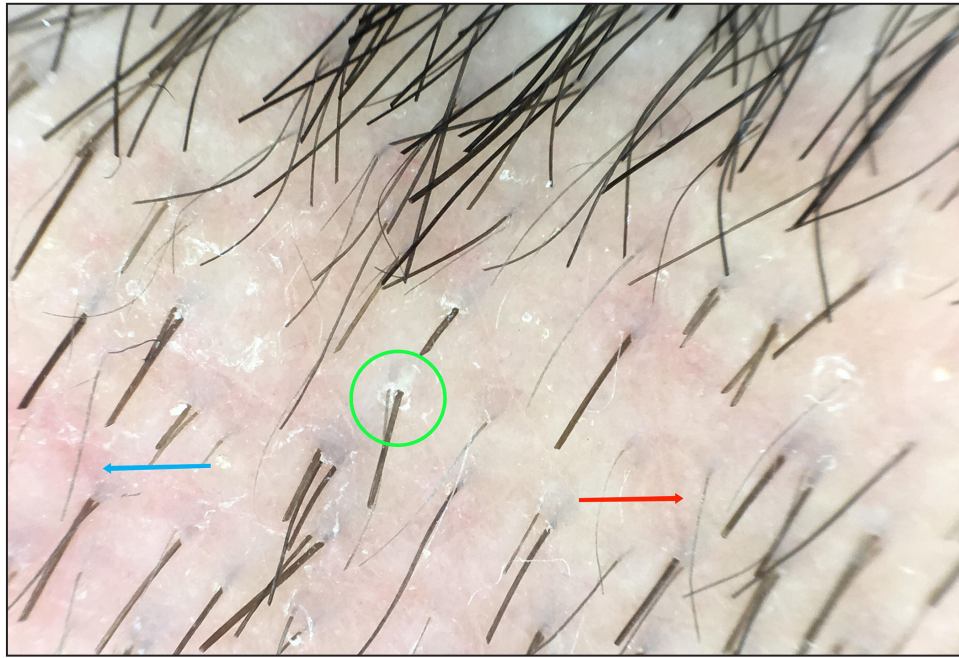
**Figure 1:** Annular alopecia and mild erythema on the scalp.

**How to cite this article:** Wu R, Yang Z, Yang D. Linear and annular lupus panniculitis of the scalp. *Indian J Dermatol Venereol Leprol.* 2025;91:126-7. doi: 10.25259/IJDVL\_276\_2024

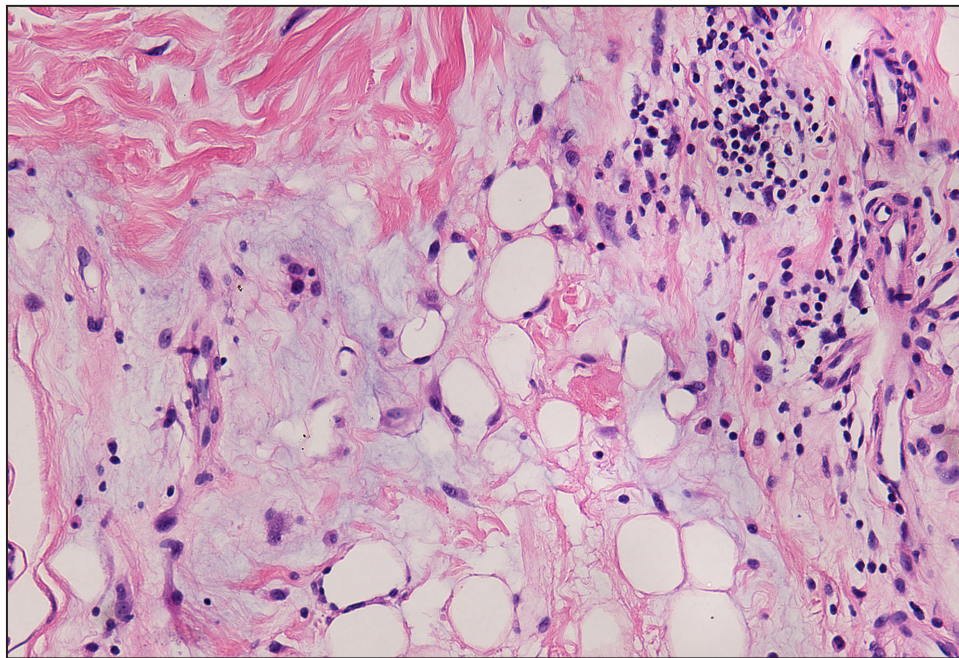
**Received:** February, 2024 **Accepted:** May, 2024 **Epub Ahead of Print:** July, 2024 **Published:** December, 2024

**DOI:** 10.25259/IJDVL\_276\_2024 **PMID:** 39152825

This is an open-access article distributed under the terms of the Creative Commons Attribution-Non Commercial-Share Alike 4.0 License, which allows others to remix, transform, and build upon the work non-commercially, as long as the author is credited and the new creations are licensed under the identical terms.



**Figure 2:** Trichoscopy showed dystrophic hairs (red arrow), mild erythema (blue arrow), and perifollicular white scales (green circle) (Beining, polarised light, ×20).



**Figure 3:** Lymphocyte-based infiltration in the fat lobules with abundant mucin deposition (Haematoxylin and eosin, 200x).

**Declaration of patient consent:** The authors certify that they have obtained all appropriate patient consent.

**Financial support and sponsorship:** Nil.

**Conflicts of interest:** There are no conflicts of interest.

**Use of artificial intelligence (AI)-assisted technology for manuscript preparation:** The authors confirm that no artificial intelligence (AI)-assisted technology was used to assist in the writing or editing of the manuscript, and no images were manipulated using AI.

**Ruiying Wu<sup>1</sup>, Zhishan Yang<sup>1</sup>, Dingquan Yang<sup>1</sup>**

<sup>1</sup>Department of Dermatology, China-Japan Friendship Hospital, Chaoyang District, Beijing, China.

**Corresponding author:**

Dr. Dingquan Yang,

Department of Dermatology, China-Japan Friendship Hospital, Chaoyang District, Beijing, China.

ydqlx@163.com