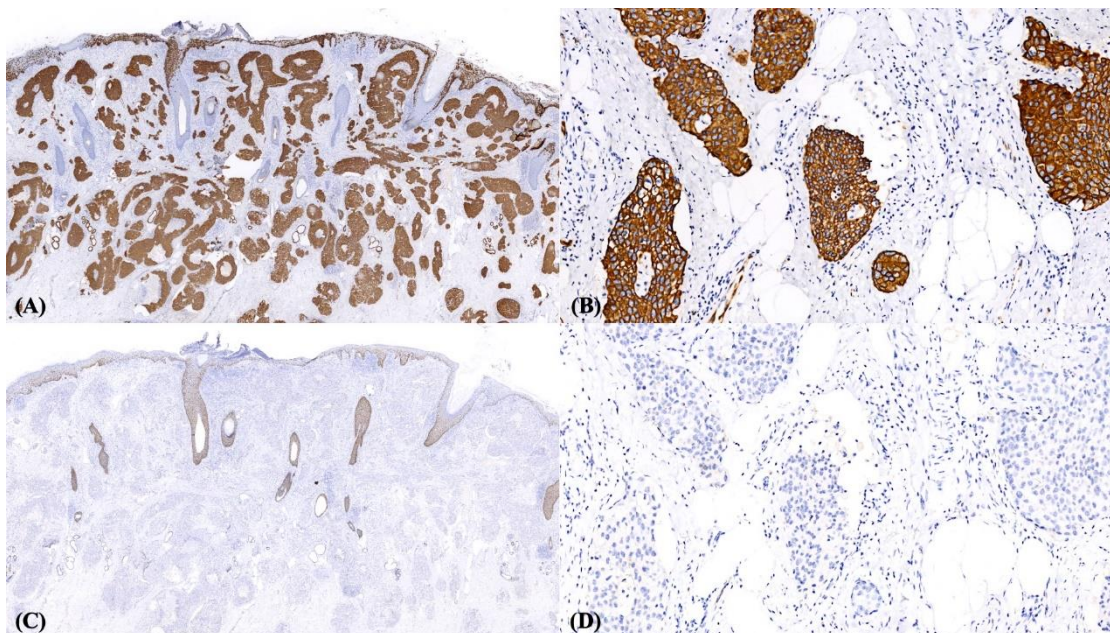


Supplementary Figure 1: Atypical epithelioid cells infiltrated in the epidermis, dermis, and lymphovascular structures (Haematoxylin and eosin staining, original magnification 100x)



Supplementary Figure 2 Atypical epithelioid cells were positive for CK7 (panel A- 10x, panel B-100x) and negative for P40 (panel C- 10x, panel D 100x).