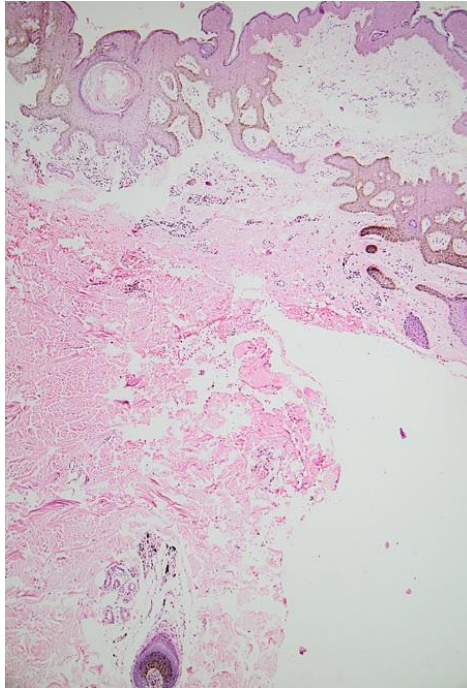
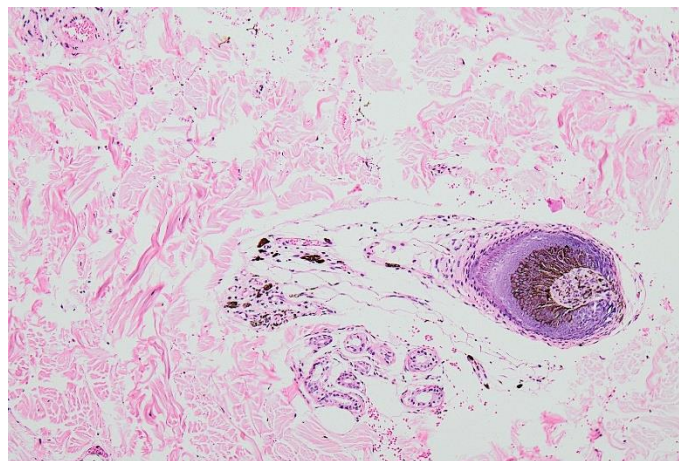


### Supplementary Files- Histopathology



**Histopathology showing epidermis with low papillomatosis, acanthosis, proliferation of rete ridges and increased melanin surrounding hair follicles. (H&E; x40).**



**The dermis shows mild chronic inflammation with a hair follicle enveloped by few round to oval nevus cells containing melanin pigment. (H&E; x100).**